



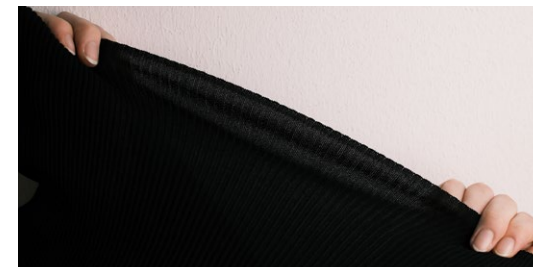
# 2027 SS COLLECTION

## Featured Yarn Stories

### PROLOGUE

MONTELUCE 2027 Spring Summer Collection was created under the theme “creating products that are chosen”. Rather than pursuing cost-driven manufacturing, this collection emphasizes the meaning and strengths behind the products we propose. This is reflected in our careful selection of raw materials, the combinations of yarns, the spinning methods, and the specialized processing techniques applied to the yarn.

Moving forward, we will continue to deepen these strengths as we bring our yarn to the global stage.



# BIOVINE / FIENO

Linesta Cotton with a Refreshing, Linen-like Touch on Your Skin.

BIOVINE NM1/25 ORGANIC COTTON 100%

FIENO NM1/13 ORGANIC COTTON 100%

**BIOVINE** and **FIENO** are new materials that achieve the perfect balance of a linen-like refreshing cool touch with exceptional softness.

It has long been difficult to perfectly combine softness with a crisp feel, as linen-like finishes such as the “Gima (pseudo-linen) treatment” often accentuate stiffness due to their dry touch.

At **MONTELUCE**, through years of collaboration and negotiation with our partner factories, we have developed a unique finishing method that delivers both the airy, cool touch and excellent skin comfort of linen while maintaining a soft texture. To emphasize this unprecedented material quality and texture, we have named it the “Linesta Finish.”

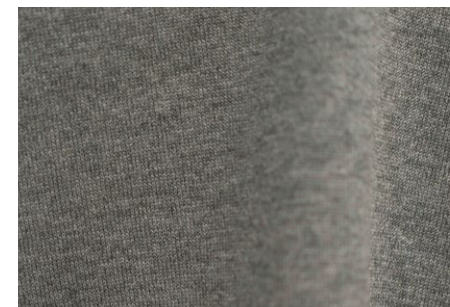
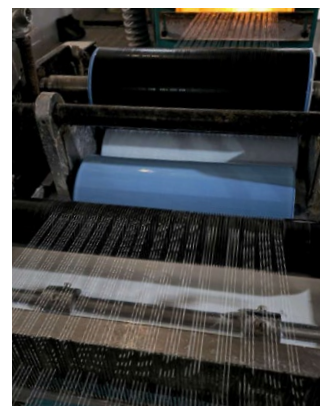
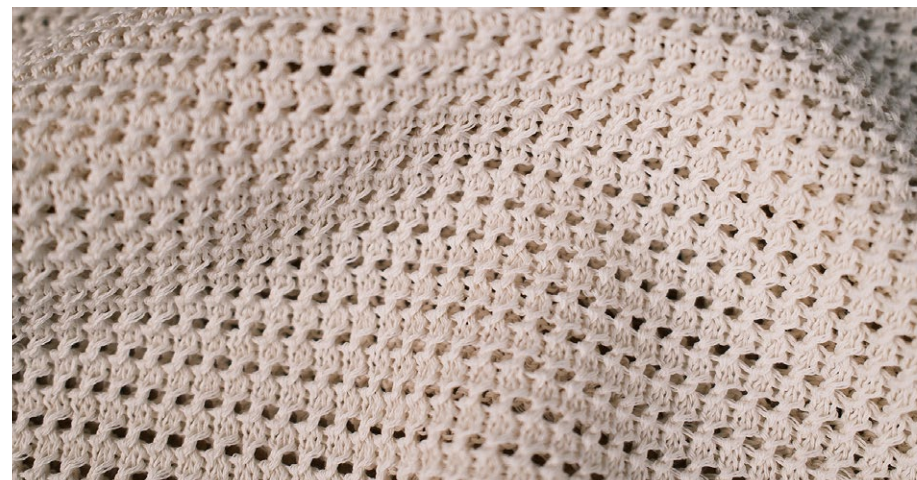
For this collection, **MONTELUCE** has developed new materials, **BIOVINE** (NM1/25) and **FIENO** (NM1/13), featuring the Linesta Finish and made from 100% organic cotton.

As warmer climates continue to extend, the demand for airy, dry-touch fabrics is steadily increasing. **BIOVINE** and **FIENO**, however, go a step further by providing a soft, comfortable feel even during long hours of wear, achieving the ideal balance of breathability and comfort.

These two materials are also available in top-dyed colors. We are confident that they can inspire a wide range of creative designs, not only through their distinctive textures but also through the signature **MONTELUCE** color collection.

## ► POINT ◀

- Linen-like texture, made from 100% organic cotton
- Cool touch material suitable for midsummer wear
- Available in top-dyed colors



# PAPIER40 / PAPIER56

Airy, Cool, Effortlessly Wearable — Crafted from Paper.

PAPIER40 NM1/40 PAPER 57%, RECYCLED POLYESTER43%

PAPIER56 NM1/56 PAPER 76%, POLYESTER24%

Washi paper yarn—What do you see?

You might think of a crisp, cool touch, light and slightly crunchy. Yet at the same time, many people find that traditional washi yarns can feel a bit too stiff.

**PAPIER**, our new 1/40-count and 1/56 yarn, offers both the distinctive cool sensation of paper yarn and an unexpected softness, all while maintaining a beautifully even surface when knitted.

This is the next generation of washi yarn—one that's both refreshing and remarkably soft.

The raw material for **PAPIER** is high-quality, ultra-thin washi (Japanese paper). Unlike ordinary paper, washi offers exceptional uniformity. This high level of consistency greatly influences the final finish and contributes to the yarn's strength.

But the secret behind **PAPIER** lies not only in its raw materials—its manufacturing process is equally important.

Most washi yarns are produced by first slicing the washi into long, thin strips before twisting it together with another thread. In contrast, **PAPIER** is made using a patented system that performs the washi-slitting and the twisting with recycled polyester in a single continuous process.

By integrating these steps, the freshly slit washi remains smooth and untwisted as it enters the spinning stage. The result is a cleaner, more refined yarn, and a beautifully even texture when knitted.

For this yarn, we intentionally chose coniferous trees as the raw material for the washi. Did you know that conifers are actually an eco-friendly resource?



After around 50 years, conifer trees begin to lose their ability to absorb CO<sub>2</sub>, much like how human metabolism slows with age and their oxygen production reaches its peak. Regular, responsible thinning is therefore essential for maintaining forest health and promoting the growth of the next generation of trees.

The harvested wood is used for construction and other purposes, while every bit of leftover offcuts is fully utilized to produce the ultra-thin washi used in **PAPIER**.

Thanks to the creativity and dedication of the **MONTELUCE** yarn development team, **PAPIER** delivers stable quality and productivity while achieving strength, elasticity, a soft hand feel, and easy-care performance such as quick absorption and fast drying.

This versatile material works not only for spring–summer basics but is also suitable for whole garment production.

---

#### ► POINT ◀

- An exceptional washi yarn with a unique, refreshing feel and remarkable softness.
  - Special manufacturing method ensures strength and elasticity while maintaining a beautiful knit surface
  - Eco-friendly material made from coniferous trees
  - Easy-care fabric with quick absorption and quick-drying properties
  - Suitable for whole garment production
- 



# SPX COTTON / SPX COTTON CODE18

From Innerwear to Outerwear and Bottoms  
—Perfect for Every Season and Every Style.

SPX COTTON NM1/52 ORGANIC COTTON51%, RECYCLED POLYESTER49%  
SPX COTTON CODE18 NM1/18 ORGANIC COTTON53%, RECYCLED POLYESTER47%

Introduced as a new material in the previous season (26-27AW), **SPX COTTON** and **SPX CODE** combine organic cotton with recycled polyester.

Thanks to their exceptional lightness and stretch, they quickly became instant favorites.

We would like to highlight that this material is suitable not only for AW season but also as an all-season option for SS collections.

By adjusting the yarn count and knit structure, it can be applied to a wide range of garments—from outerwear and coordinated sets to innerwear and skirts.

For this season, **MONTELUCE** has produced the following items:

## 1. Outerwear

Thanks to the yarn's natural loft, increasing the yarn count creates a thicker fabric, making it fully suitable for outerwear applications.

## 2. Camisoles

With its high stretch, this material provides excellent comfort even when used for innerwear.

## 3. Bottoms

The fabric resists wrinkles and demonstrates excellent pilling performance\*, making it ideal for bottoms without worrying about fuzz or pills.

\*Pilling test results: Grade 5 after 3 hours, Grade 4.5 after 5 hours.



This versatile material adapts easily to a wide range of garments, and its machine-washable property ensures easy care.

This material could be the ideal choice as a key material for your collections, suitable for all seasons and purposes.

---

► POINT ◀

- Lightweight yarn with natural loft, excellent stretch, and superior pilling resistance
  - Versatile for outerwear, innerwear, and bottoms through adjustments in yarn count and knit structure
  - Machine-washable, offering outstanding easy-care performance
- 



# CEDRE+e

## Machine-Washable Linen — Polyester Power for Easy Care

CEDRE+e NM1/38 LINEN 23%, COTTON 52%, RECYCLED POLYESTER25%

When it comes to refreshing, spring–summer materials, linen is often the first choice. However, it can be somewhat tricky to care for prone to shrinking and noticeable pilling after repeated washes.

CEDRE+e was developed to solve these common issues.

CEDRE is one of MONTELUCE’s popular materials. Now, a new version featuring recycled polyester, CEDRE+e, has been introduced.  
(\* CEDRE will be discontinued once existing stock is sold.)

The appeal of CEDRE+e lies not only in its luxurious texture but also in its machine-washable performance. Even after repeated washes in a home washing machine, it maintains its shape and beauty.

The secret behind this material is the fiber blend.  
By incorporating polyester, the material gains extra durability, making it sturdy enough to be washed vigorously in a household washing machine.

The demand for materials that can be easily washed at home has been growing worldwide in recent years. Especially for clothing worn in hot, humid seasons, CEDRE+e is the ideal choice—washable, clean, and able to maintain its beauty over time.

### ▶ POINT ◀

- A cool touch that’s perfect for warm, humid weather.
- Easy-care: a linen-blend material that is fully machine washable



# BENSOLO

---

A Luxurious Sense of Relaxation is Created with This Eco-friendly Cupro Material.

BENSOLO NM 1/72 CUPRO(bemberg)60%, POLYESTER40%

**BENSOLO** has mostly been introduced for an elegant look; however, this season we want to highlight the unique softness that only **BENSOLO** can offer and propose it as a material for relaxed, effortless wear.

One of the key raw materials used is cupro, a naturally derived regenerated fiber made from cotton linter.

Cotton linter refers to the 2–6 mm fuzzy fibers that remain on the surface of cotton seeds after the cotton is harvested. Because these fibers are very short, they are not suitable for spinning. However, they are rich in cellulose, making them highly valuable as a primary raw material for regenerated fibers.

**BENSOLO** is a blend of this eco-friendly regenerated cellulose fiber Bemberg™ cupro and stretch polyester.

Thanks to a special manufacturing process, the yarn traps a large amount of air, giving it lightness, a uniquely gentle touch, elegant luster, and a beautifully smooth surface.

Using this **BENSOLO** yarn, **MONTELUCE** is introducing a new category of relaxation wear this season—something we've never proposed before.

Because of this fine yarn, it can take on a firm texture or a soft one depending on the knit structure, making it highly versatile.



This season, we introduce a new kind of relaxed wear—pieces that offer ease and comfort while still expressing the material’s refined quality. Suitable for unwinding at home, yet polished enough to wear outdoors.

We hope you will enjoy **BENSOLO** across a wide range of scenes and seasons.

---

► **POINT** ◀

- Made with eco-friendly cupro
  - Special processing traps air inside the yarn, creating a lightweight feel with a soft touch and elegant luster
  - Highly versatile—its knit structure can be adjusted to achieve anything from a firm, structured feel to a soft, gentle texture
- 

